



TREWIDLAND PRIMARY & PRESCHOOL



INSPIRING EXCELLENCE ACROSS THE CURRICULUM

2023 Summer Reading Challenge

Dear Parents

I recently spoke with Mrs Foote from Liskeard library who informed me the Summer Reading Challenge has now finished! We look forward to inviting her into school again soon to deliver the children's certificates for completing the Summer Reading Challenge of reading 6 books over the duration of the summer holidays.

Mr Lovell



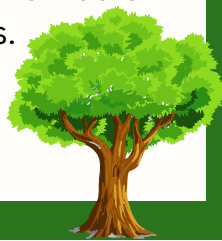
Hundred Acre Wood Class

What a great start to the year we have had in Hundred Acre Wood Class! I have enjoyed getting to know your lovely children and getting settled into the new routine, they have made me feel very welcome, so thank you!

This week we have started our Fiction topic by looking at the story 'The Yeti and the Bird', a lovely story about the value of friendship which is full of character and humour.

In Mathematics we have been delving into our unit of Place Value and have been representing and partitioning numbers using lots of resources.

Mrs Bartlett



Gruffalo Wood Class

It's been an amazing start to the year in Gruffalo Wood. All of the children have enjoyed getting reacquainted with our school routines and have settled back into school life brilliantly!

This week we have been learning all about rainbows, using different mediums to create our own rainbows along with learning a special song to remember the colours of a rainbow.

It's been a joy to see the smiling faces and the confident attitudes of all our students who are well prepared for an excellent year of learning. Well done!

Miss Hume



Farthing Wood Class

We have enjoyed a wonderful start to the new school year & welcomed our lovely new Year 5 pupil: Ivy to the class. This week, we have been working hard to secure our knowledge of column addition for more than 4 digits and it has been great using our brand new interactive whiteboard which was fitted to our classroom over the summer. We have enjoyed starting our new Fiction topic about 'The Girl Who Stole an Elephant' a wonderful story with themes of morality, friendship, teamwork and loyalty, this book incorporates tension and jeopardy in an exciting coming-of-age adventure. With our wonderful Year 3 children, in the afternoons, we have begun to explore our topic: the Looe Valley. In Modern Foreign Languages, we have explored French towns and developed our understanding of French verbs and nouns around the town. In Computing, we have been exploring the app: Rusty's Crystal Chaos. It has been exciting to debug algorithms whilst we examine coding more carefully. Children have been following the algorithms and spotting the errors! This was a really fun way to develop coding skills and computational thinking. Thank you children for making the first week back such a brilliant one! Mrs Moore



TREWIDLAND PRIMARY & PRESCHOOL



INSPIRING EXCELLENCE ACROSS THE CURRICULUM



The deadline for applications is
15 January 2024

Do you have a child born **between 1 September 2019 and 31 August 2020**?

If so, you will need to apply for a place in a reception class in September 2024 for that child by the deadline of **15 January 2024**.



Please note: you will need to apply even if your child attends a school's nursery or pre-school class. If a school is oversubscribed the fact that a child attends a school's nursery or pre-school, or a local nursery or pre-school, does not automatically guarantee a place at that school. The school's oversubscription criteria will be used to allocate places. Visit our website or contact us for more information.

Visit www.cornwall.gov.uk/admissions for more information and to access the online application system

www.cornwall.gov.uk/admissions





The deadline for applications is
15 January 2024

Starting school

September 2024

Applying for a place in a reception class for children born between 1 September 2019 and 31 August 2020



Attending a nursery or pre-school

You will need to apply even if your child attends a school's nursery or pre-school class. Please note that if a school is oversubscribed the fact that a child attends a school's nursery or pre-school, or a local nursery or pre-school, does not automatically guarantee a place at that school. The school's oversubscription criteria will be used to allocate places. Visit our website or contact us for more information.

Information and guidance

Website and application form: www.cornwall.gov.uk/admissions
Email: schooladmissions@cornwall.gov.uk
Post: School Admissions Team, County Hall, Truro, TR1 3AY
Telephone: 0300 1234 101

www.cornwall.gov.uk/admissions





The deadline for applications is
31 October 2023

Transfer to secondary school

September 2024

Applying for a place in year seven at a secondary school



Information and guidance

Website and application form: www.cornwall.gov.uk/admissions
Email: schooladmissions@cornwall.gov.uk
Post: School Admissions Team, County Hall, Truro, TR1 3AY
Telephone: 0300 1234 101

www.cornwall.gov.uk/admissions



Do you have a child born between 1 September 2019 and 31 August 2020? Remember, you will need to apply for a place in a reception class in September 2024 for that child by 15 January 2024.

We would love to show you around our wonderful rural setting which was rated as continuing to be 'Good' by Ofsted in 2021. Our Mission is to recognise the unique talents and abilities of our pupils and to inspire excellence across the curriculum, by providing a happy, secure, community environment in which children can thrive and develop. Please contact the school to arrange a visit and follow our link for more information:
<https://www.trewidlandprimaryandpreschool.co.uk/information/admissions>





TREWIDLAND PRIMARY & PRESCHOOL



INSPIRING EXCELLENCE ACROSS THE CURRICULUM

Wrap around care

Just a quick reminder that you can book (in advance please) for Breakfast Club & After School Care. This is open to all children including pre-school. You can book by either phoning or emailing the school secretary, it does get quite busy to please book in advance.

Breakfast club is organised by Miss Hume and Mrs Norris, and this opens from 8:00am.

Breakfast club costs £3 per child (half price for siblings) and breakfast is included.

Afterschool club is also organised by both Miss Hume and Mrs Norris. Afterschool club opens from 3.15 – 4.30pm and costs £7 or until 5:30 its £10 (half price for siblings). A drink and snack is provided.

Lunches

Could you please ensure that if your child is having a school lunch that the meal is paid in advance. Lunches are now **£2.65** per child per day, paid by cash or cheque payable to Chartwells. Please send monies in an envelope with your child's name, date and amount enclosed. **School lunches are free to children in Reception, Year 1 and Year 2.**

Thank you in advance for your co-operation in this matter.



PTA AGM Invite

We will be holding the PTA AGM **after school on Wednesday 27th September.** This is open to everyone to come along. During the meeting we will be planning the fundraising ideas and events for the coming year.

We would like to encourage as many parents with children in school to attend the meeting as possible as the PTA benefits every child in school and only works with parents and teachers support. We would particularly welcome parents of pupils new to the school and those of pupils in the lower end of the school. It would be lovely if you could join us.

PTA Purpose: The PTA is an organisation run solely by volunteers to raise money to help the school provide materials, resources and facilities for the benefit of everyone who uses the school by running a variety of events throughout the school year. Significantly, the activities help to bring parents together and promote good communications between parents, staff and the village while working towards the common goal of a tight knit caring community. All the parents and staff are members of the PTA, (by default). Your involvement can be from enjoying the events to helping organise the events to suggesting new money raising ideas.



TREWIDLAND PRIMARY & PRESCHOOL



INSPIRING EXCELLENCE ACROSS THE CURRICULUM

Uniform


Please can we remind you of the uniform expectations at our school, they are set out below and can also be found on our school website. The school colours are Green and Gold. The children wear green sweatshirts, jumpers or cardigans, grey trousers or skirts and white shirts, blouses or polo shirts, white, black or grey socks. In the summer the girls may wear green and white checked dresses and the boys can wear short trousers. All items should be individually marked with your child's name to ensure they return home at the end of the day. Green jumpers, cardigans and sweatshirts with the Trewidland Logo are compulsory.


Uniform Supplier: Parents can access the uniform supplier directly using an online link set up with Wovina in Bodmin. You can go online at www.wovina.com, click on the list of schools and find the options for Trewidland School.

PE Kit: All children need black shorts and plain white tee shirts, plimsolls/trainers and spare socks, clearly marked, in a PE bag. These should be available in school throughout the week.

Jewellery: Jewellery is inappropriate with school uniform. Indeed, it can be dangerous, especially in PE lessons. We would ask that no jewellery be worn in school except stud earrings and watches. The use of hair products, such as colouring, spray, gel etc., is not considered appropriate in school.

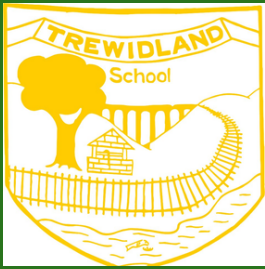
Footwear: Regarding footwear, our ideal is that all children should wear 'sensible' black shoes and not trainers or canvas shoes. High-heeled or platform shoes are dangerous and unsuitable in the playground, so are unacceptable for school use. In summer, adequately supportive sandals with socks may be worn, but beach shoes are unacceptable.

 **A huge well done to the children in Farthing wood class last term who made painted clay tiles of the buildings in Liskeard Town Centre with the help of local artist, Rach Richardson.**

Their artwork is currently displayed on the parade bus stop outside the Post Office. Panels will be on display until the morning of Monday 18th September. We hope some children will get the chance to see their panel in real life! 

✨ **Well done children, excellent artwork!** ✨





TREWIDLAND PRIMARY & PRESCHOOL



INSPIRING EXCELLENCE ACROSS THE CURRICULUM



Looking ahead

Nasal Flu Immunisations, YR-Y6
Wednesday 27th September

Looe Valley Trip TBC
October/November

Autumn Lunch
Friday 13th October

Y4-Y6 Residential, Beam House
18th-20th October

Last day before October half term
Friday 20th October

INSET Day
Monday 30th October

Back to school after half term
Tuesday 31st October

Tempest individual photographs
Friday 10th November

INSET Day

Friday 25th November

Y1 Hearing Screening
Friday 1st December

Christmas Productions
Tuesday 12th December
Afternoon & Evening

Christingle TBC
Friday 15th December

Christmas Parties
Monday 18th December

Break up for Christmas
Tuesday 19th December

Back to school after Christmas
Thursday 4th January

Parents' Evening
Monday 5th February

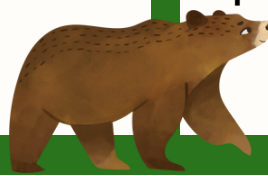
Stars of this Week

Pre-school & Reception Star:
The whole of Gruffalo Wood Class!

Year 1 & 2 Star: Joel

Year 3 & 4 Star: Charlie N

Year 5 & 6 Star: Ivy



Attendance

Our class weekly attendance percentages:

Hundred Acre Wood: **88%**
(Poor attendance)

Farthing Wood: **83%**
(Poor attendance)

Overall school attendance: **86%**
(Poor attendance)

Please support your child to develop lifelong habits of good attendance and punctuality in order to allow them to achieve their full potential.