



# TREWIDLAND PRIMARY & PRESCHOOL

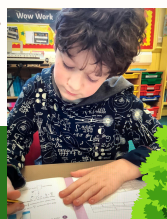


INSPIRING EXCELLENCE ACROSS  
THE CURRICULUM

## COMING UP NEXT WEEK

Strike Action on Wednesday 1st of February - please see letter sent home on Tuesday 24th February.

NSPCC Numbers Day 3rd Feb: joining schools and nurseries across the UK on Friday 3 February 2023 for a mega maths fundraising day. Our children will be taking part in Dress up for Digits (wearing an outfit with numbers on it) while raising money to support NSPCC services such as 'Speak Out Stay Safe' and 'Childline'. Suggested donation of £1.



## NEWS FROM HUNDRED ACRE WOOD:

This week, we have been busy making and eating jam sandwiches. We have focused on writing clear and explicit instructions so the children can tell you how to make the perfect jam sandwich. In maths we have been focusing on money with Y2s, number bonds to 20 for Y1s and number bonds to 10 for YR. We are continuing to enjoy looking at the weather and have made rain gauges to monitor the rain at home and in different parts of the school grounds.



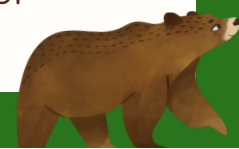
## NEWS FROM FARTHING WOOD:

It has been a busy week completing our Ratio & Fraction assessments in Mathematics where children demonstrated excellent progress across this unit of work. In English, we have been getting to grips with grammar and planning our alternative fairy tales. We have our 'Big Write' coming up when our story planning frames transform into finished fairy tales. We have also enjoyed getting to know all about the Smashing Anglo-Saxons and each child produced amazing art-work and information texts demonstrating their learning.



## NEWS FROM GRUFFALO WOOD:

This week in Gruffalo class, we have been continuing our adventure into the seasons by investigating how our world changes in Spring, Summer, Autumn and Winter. We have experimented with different colours to show how the leaves of a tree change and created our own representations of the four seasons. Our special sound this week was "p" and all of our amazing pre-schoolers have been working hard to recognise and write this sound. Super learning!





# TREWIDLAND PRIMARY & PRESCHOOL



INSPIRING EXCELLENCE ACROSS THE  
CURRICULUM



## AUTHOR VISITS



We are excited to announce that we have partnered up with Puffin Books & our children will be enjoying virtual author visits in all classes across this term! Our first session is with Abi Elphinstone, author of *Saving Neverland*. Further details & photographs of these wonderful events will follow.



## WILD TRIBE TUESDAYS

Mrs Blackburn will be alternating Wild Tribe sessions each Tuesday so she can spend longer with each class enjoying all the wonders our beautiful setting can offer! Therefore, your children will only need their Wild Tribe clothes once a fortnight. Children should come to school dressed in their Wild Tribe clothes on their designated Wild Tribe Tuesday and school uniform on the other Tuesdays.



Winter Wild Tribe kit must include all of these items:

- waterproof trainers or walking boots
- Wellington boots
- waterproof coat
- waterproof trousers
- full leg leggings or tracksuit bottoms
- long sleeve t-shirt
- jumper or hoodie
- thick socks
- warm hat
- gloves
- scarf

### Wild Tribe Tuesdays:

24th Jan: Hundred Acre  
31st Jan: Farthing Wood  
7th Feb: Hundred Acre  
21st Feb: Farthing Wood  
28th Feb: Hundred Acre  
7th Mar: Farthing Wood  
14th Mar: Hundred Acre  
21st Mar: Farthing Wood  
28th Mar: Hundred Acre



## SCHOOL CLUBS

**CIRCUIT TRAINING** - Mondays after school until 4:15pm with Mrs Blackburn

**CHESS CLUB** - Thursday Lunchtime's with Mrs Moore

**SATS Booster CLUB** - Thursdays until 4:30pm - Y6 with Mrs Moore & Y2 with Miss Hume

**WRAP AROUND CARE** - available every night until 5:30pm for all children. Breakfast club is available from 8am every morning.



## THE NEXT TWO WEEKS

### NSPCC NUMBER DAY

3rd February

### PUFFIN VIRTUAL AUTHOR VISIT

3rd February

### CHILDREN MENTAL HEALTH WEEK

6th - 10th February

### SUNSHINE DAY

7th February

### ART EXHIBITION

9th February

### PUFFIN VIRTUAL AUTHOR VISIT 2

10th February

### HALF TERM

10th-17th February





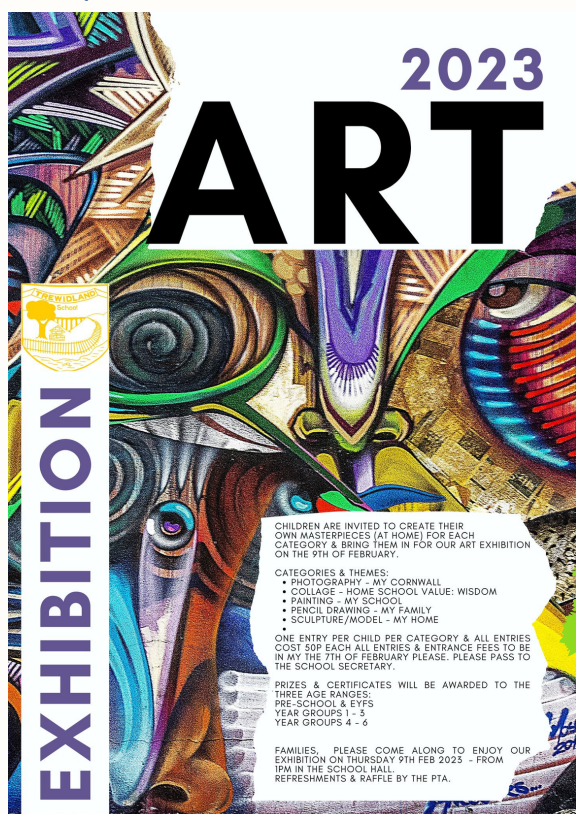


# TREWIDLAND PRIMARY & PRESCHOOL



INSPIRING EXCELLENCE ACROSS THE CURRICULUM

## ART EXHIBITION



CHILDREN ARE INVITED TO CREATE THEIR OWN MASTERPIECES (AT HOME) FOR EACH CATEGORY & BRING THEM IN FOR OUR ART EXHIBITION ON THE 9TH OF FEBRUARY.

CATEGORIES & THEMES:  
• PHOTOGRAPHY - MY CORNWALL  
• COLLAGE - HOME SCHOOL VALUE: WISDOM  
• PAINTING - MY SCHOOL  
• PENCIL DRAWING - MY FAMILY  
• SCULPTURE/MODEL - MY HOME

ONE ENTRY PER CHILD PER CATEGORY & ALL ENTRIES COST 50P EACH ALL ENTRIES & ENTRANCE FEES TO BE IN MY THE 7TH OF FEBRUARY PLEASE. PLEASE PASS TO THE SCHOOL SECRETARY.

PRIZES & CERTIFICATES WILL BE AWARDED TO THE THREE AGE RANGES:  
PRE-SCHOOL & EYFS  
YEAR GROUPS 1 - 5  
YEAR GROUPS 4 - 6

FAMILIES, PLEASE COME ALONG TO ENJOY OUR EXHIBITION ON THURSDAY 9TH FEB 2023 - FROM 1PM IN THE SCHOOL HALL. REFRESHMENTS & RAFFLE BY THE PTA.



## SPRING SHOW

### *Trewidland Primary & Pre-School Spring Show*



Pupils may enter as many of the following classes as they would like:

1. A spring garden on a biscuit tin lid
2. A handmade flower
3. A poem about Spring time
4. A decorated egg
5. A junk (spring-themed) model
6. A handcrafted animal
7. A spring bonnet
8. A chocolate nest (no nuts)
9. A decorated pebble
10. A rainbow collage



Each entry 50p - all proceeds are going to our PTA!

So get designing & creating!  
Make sure you are show ready!

Date: March 30th

Place: School Hall

Everyone welcome to view the show from 1.30pm

## KEY DATES ACROSS THE YEAR

### INSET DAY

20th February

### PARENTS' EVE

1st March

### POTENTIAL STRIKE ACTION

2nd March

### WORLD BOOK DAY

3rd March

### MUSIC MASTER CLASS

8th March

### EP&WV MASTER CLASS

9th March

### GOVERNORS' DAY

9th March

### POTENTIAL STRIKE ACTION

15th & 16th March

### SPRING SHOW

30th March

### END OF TERM

31st March

### START OF NEW TERM

17th April

### REPORTS GOING OUT

w/c 17th April

### PARENT CONSULTATIONS

27th April

### SPORTS DAY

15th June





# TREWIDLAND PRIMARY & PRESCHOOL



INSPIRING EXCELLENCE ACROSS THE CURRICULUM

**World Book Day** is happening on the 3rd of March & children are invited to dress up as their favourite book character for the day! Each child will receive their Book Day tokens which they can exchange at a local bookshop for a new book! We also have **Masterclasses** happening at Liskeard Secondary School including: Music & Ethics, Philosophy & World Views - parents of children involved have already been notified of these events.

**Children's Mental Health week** is coming up: 6-10th of February. On the 7th of February we will be enjoying a **Sunshine Day** which focuses on team & self-esteem building activities for our children. Children are invited to wear their boldest & brightest clothes to school that day - bringing a rainbow of colour & sunshine to our beautiful school. The week will also include our **Art Exhibition** - please can all entries be in school for the 8th of February at the latest! We can't wait to see all the wonderful exhibition entries and welcome you all to attend a special viewing from 1pm in the School Hall. Parents are welcome to take their children home early at the end of the event.

We know how important engaging educational experience are for our children's learning so we have some wonderful trips & visits planned for the rest of the year, including: a trip to The Royal Cornwall Museum, Virtual Visits from bestselling Authors, Swimming lessons for KS2 & a welcome return of the Space Odyssey Dome, to name but a few! Further details and permission forms will be coming home as soon as these dates & transport have been confirmed by our visitors & trip organisers.

**Many thanks for your continued support,  
Team Trewidland**



## STAFF & CONTACTS

Secretary: Mrs Palmer  
secretary@trewidland.cornwall.sch.uk

Head Teacher: Mr Lovell  
head@trewidland.cornwall.sch.uk

Deputy Head Teacher: Mrs Moore  
bmoore@trewidland.cornwall.sch.uk

Chair of Governors: Mr Powell-Jones  
gary.powelljones@smart-trust.net

Designated Safeguarding Lead: Mr Lovell &  
Deputy DSL :Mrs Moore

SENDCo: Mrs Pipe

Pre-School Lead: Miss Hume

School Number: 01503 240275

Website: <https://www.trewidland.net/>

TREWIDLAND PRIMARY & PRE-SCHOOL

### YEAR 6 SATS BOOSTER SESSIONS

PREPARING & SUPPORTING ALL Y6 CHILDREN AHEAD OF THEIR SATS IN MAY.

STARTING AS AN AFTER SCHOOL CLUB ON THE 19TH JANUARY!

RUNNING EVERY THURSDAY AFTER SCHOOL, THROUGHOUT THE SPRING TERM, FROM 3.15 - 4.30PM, WITH MRS MOORE

## SATs Booster Clubs

## Year 6 & Year 2

TREWIDLAND PRIMARY & PRE-SCHOOL

### YEAR 2 SATS BOOSTER SESSIONS

PREPARING & SUPPORTING ALL Y2 CHILDREN AHEAD OF THEIR SATS IN THE SUMMER TERM.

STARTING AS AN AFTER SCHOOL CLUB ON THE 19TH JANUARY!

RUNNING EVERY THURSDAY AFTER SCHOOL, THROUGHOUT THE SPRING TERM, FROM 3.15 - 4.30PM, WITH MISS HUME





# TREWIDLAND PRIMARY & PRESCHOOL



INSPIRING EXCELLENCE ACROSS THE CURRICULUM

Photos from across the last few weeks:



## STARS OF THIS WEEK

**Pre-School Star:**  
**JAXXON**

**Year R Star:**  
**TEDDI**

**Year 1 & 2 Star:**  
**CHARLIE**

**Year 3 & 4 Star:**  
**COOKIE**

**Year 5 & 6 Star:**  
**NOAH**

## STARS OF LAST WEEK

**Pre-School Star:**  
**DAVY**

**Year R Star:**  
**LIAM**

**Year 1 & 2 Star:**  
**ISABELLE**

**Year 3 & 4 Star:**  
**HANNAH**

**Year 5 & 6 Star:**  
**MAISIE**



# TREWIDLAND PRIMARY & PRESCHOOL



INSPIRING EXCELLENCE ACROSS THE CURRICULUM

## Attendance & Punctuality:

Regular attendance is very important for children to achieve the best they can. We appreciate that attendance levels at this time of year can be affected by illness, particularly colds and tummy bugs. We would therefore encourage all parents to send their children into school wherever possible. However, if they have been ill with sickness and/or diarrhoea, please keep them off school until they have been symptom free for a minimum of **48 hours** to prevent the bug spreading throughout the school community as this has a significant, adverse effect on attendance levels of both staff and children. A copy of your child's attendance record is available, on request, from the school office. The importance of Punctuality: Punctuality is crucial to ensuring that your child's day at school starts smoothly and that they are in the right mindset to start learning and working hard. The classroom doors open at 8.45am and school starts at 9am. Late arrival is between 9am and 9.30am and this is recorded on your child's attendance records. Please support your child to develop lifelong habits of good attendance and punctuality in order to allow them to achieve their full potential.

### OUR CLASS WEEKLY ATTENDANCE PERCENTAGES:

FARTHING WOOD: **96.3%** (Above average)

HUNDRED ACRE WOOD: **87.5%** (Below average)

OVERALL SCHOOL ATTENDANCE: **91.9%** (Below average)

WELL DONE CHILDREN & PARENTS!



**BIG GARDEN BIRDWATCH  
IS FUN, FREE AND FOR EVERYONE. YOU  
DON'T NEED A GARDEN TO TAKE PART!  
COUNTING BIRDS FROM YOUR BALCONY, OR  
YOUR LOCAL PARK WILL PLAY A VITAL ROLE IN  
HELPING US UNDERSTAND HOW UK BIRDS  
ARE DOING. SIGN UP FOR YOUR FREE GUIDE  
AND LET'S LOOK OUT FOR BIRDS TOGETHER  
ON 27-29 JANUARY**

**[HTTPS://WWW.RSPB.ORG.UK/GET-INVOLVED/ACTIVITIES/BIRDWATCH/](https://www.rspb.org.uk/get-involved/activities/birdwatch/)**

